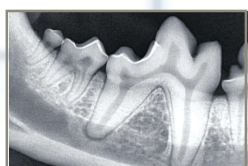


ADD VALUE TO YOUR PRACTICE WITH VETERINARY INTRAORAL X-RAY IMAGING



EzSensor^{Vet}

Intraoral CMOS Sensors

- Sizes 1.0, 1.5, 2.0 available
- Consistent image quality under a wide range of exposure conditions
- Slim design for patient comfort
- IP68 water and dust protection
- Duralumin, strong and lightweight housing material

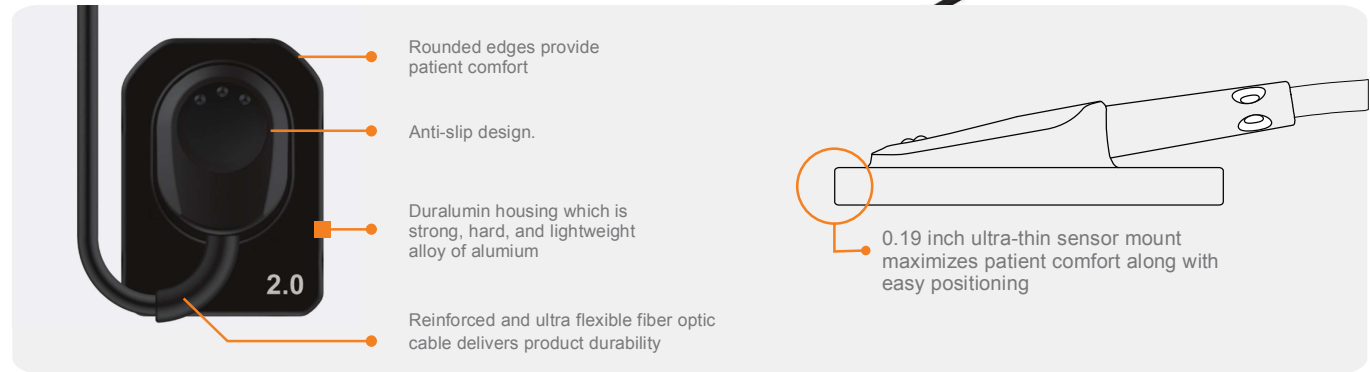
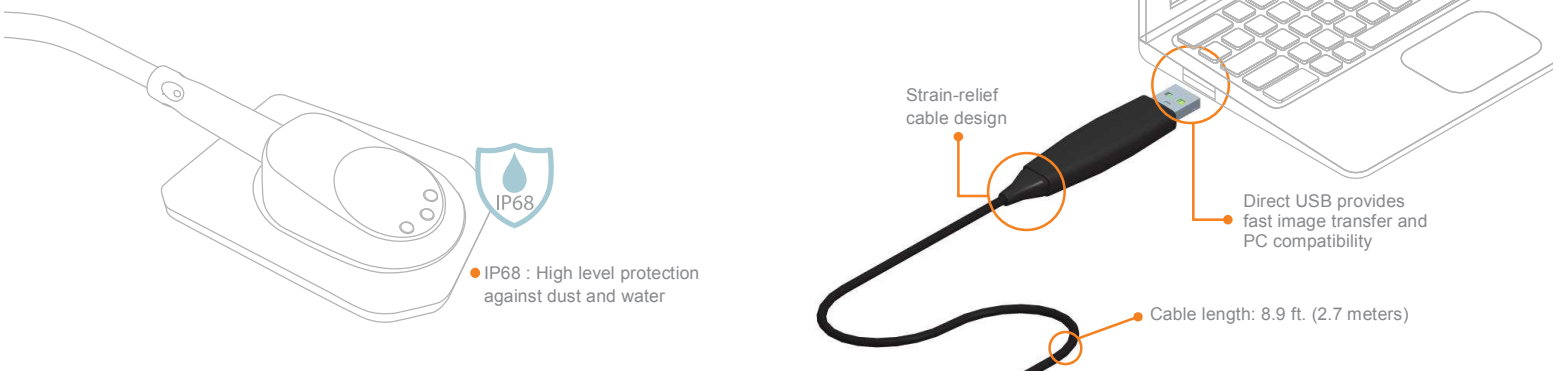


Myvet Dent

SLIM DESIGN and OPTIMUM WORKFLOW

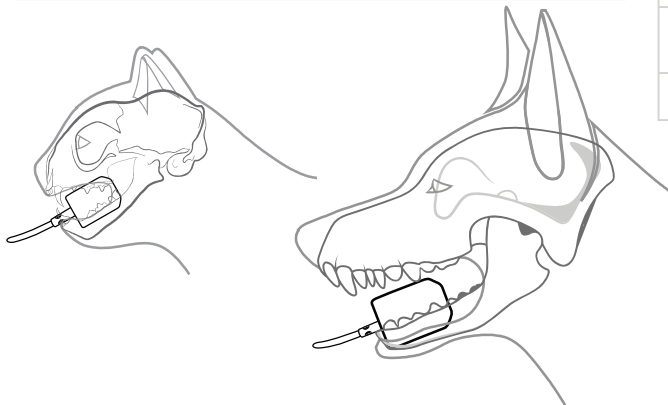
Rounded corner design with 0.19 inch slim design provides maximum comfortable placement against soft tissue by reducing pressure on oral mucosa.

- Three sizes of ergonomically designed sensors meet the needs of various animal mouth sizes
- Direct USB connector enables fast image transfer
- EzSensor Vet rated at IP68, the highest level of Ingress Protection (IP):
Complete protection against dust and water

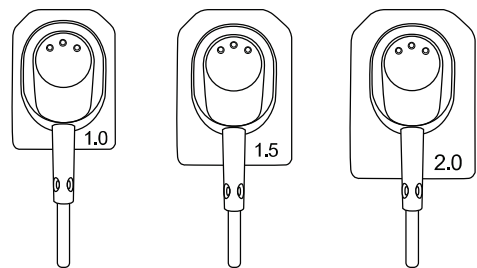


MULTIPLE SIZES and DIMENSIONS

EzSensor Vet series accommodates various mouth sizes to maximize optimum workflow and patient comfort



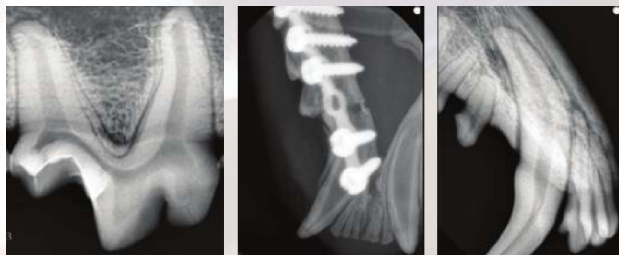
	Size 1.0	Size 1.5	Size 2.0
Active Area	0.79 x 1.81 in (20 x 30 mm)	0.94 x 1.30 in (24 x 33 mm)	1.02 x 1.42 in (26 x 36 mm)
Dimension	1 x 1.45 in (25.4 x 36.8 mm)	1.14 x 1.55 in (29.2 x 39.5 mm)	1.23 x 1.69 in (31.3 x 42.9 mm)
Thickness	0.19 in (4.8 mm)	0.19 in (4.8 mm)	0.19 in (4.8 mm)



◀ OBTAIN HIGH QUALITY DIAGNOSTIC IMAGES

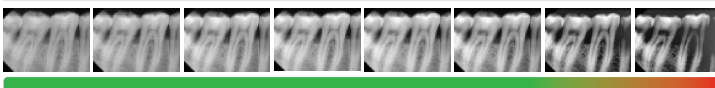
Using hybrid CMOS technology, EzSensor Vet series provide sharp, high quality images. The high-resolution technology combined with noise and artifact suppression provides clear and consistent precise diagnosis.

User friendly image acquisition software quickly produces high quality diagnostic images.



Ionizing radiation dose (mGy) and exposure (sec) comparison chart

(mGy)	0.020	0.040	0.100	0.200	0.400	0.800	1.600	2.000
(sec)	0.006	0.013	0.032	0.060	0.130	0.250	0.510	0.630



Exposure Condition: 65kVp, 6mA, 11 in SID

EzSensor Vet intraoral detectors provide maximum image quality using highly sensitive CMOS technology across a wide exposure range.”

◀ MYVET DENT | INTRAORAL DIAGNOSTIC ACQUISITION SOFTWARE



- Image acquisition software delivers advanced processing that seamlessly integrates into any clinical workflow.
- Easy-to-read user interface reduces eye strain.
- Intuitive GUI image acquisition software helps you quickly produce high quality diagnostic images.

◀ IMAGE COMPARISON VIEW

Enables users to compare two images side-by-side from same study list.

◀ FMX View

Changes image orientation by simple drag and drop. Can also rotate image if necessary.



MyVet Dent, image comparison view

The EzSensor Vet provides high quality images
for accurate diagnosis and treatment planning.

SPECIFICATIONS

		EzSensor Vet
Model Number	Unit	HDI-S
Sensor Type	-	CMOS
Scintillator	-	FOS (FOP + Csl)
Pixel Size	μm	29.6
Pixel Array	Pixels	Binning Mode:1216x878
A/D	Bits	12
Waterproof		IP68
Energy Range	KvP	55 ~ 70
Data Output (Interface)	-	Direct USB (USB 2.0)
Input Voltage	V	DC 5V, 1 AMP
Dynamic Range	dB	≥ 67
Theoretical Resolution	lp/mm	16.8
Cable Length	ft	8.6

* Specifications subject to change without prior notice *

EzSensor^{Vet}



13, Samsung 1-ro 2-gil, Hwaseong-si
Gyeonggi-do, 18449, Korea
inquiry@woorien.com www.woorien.com